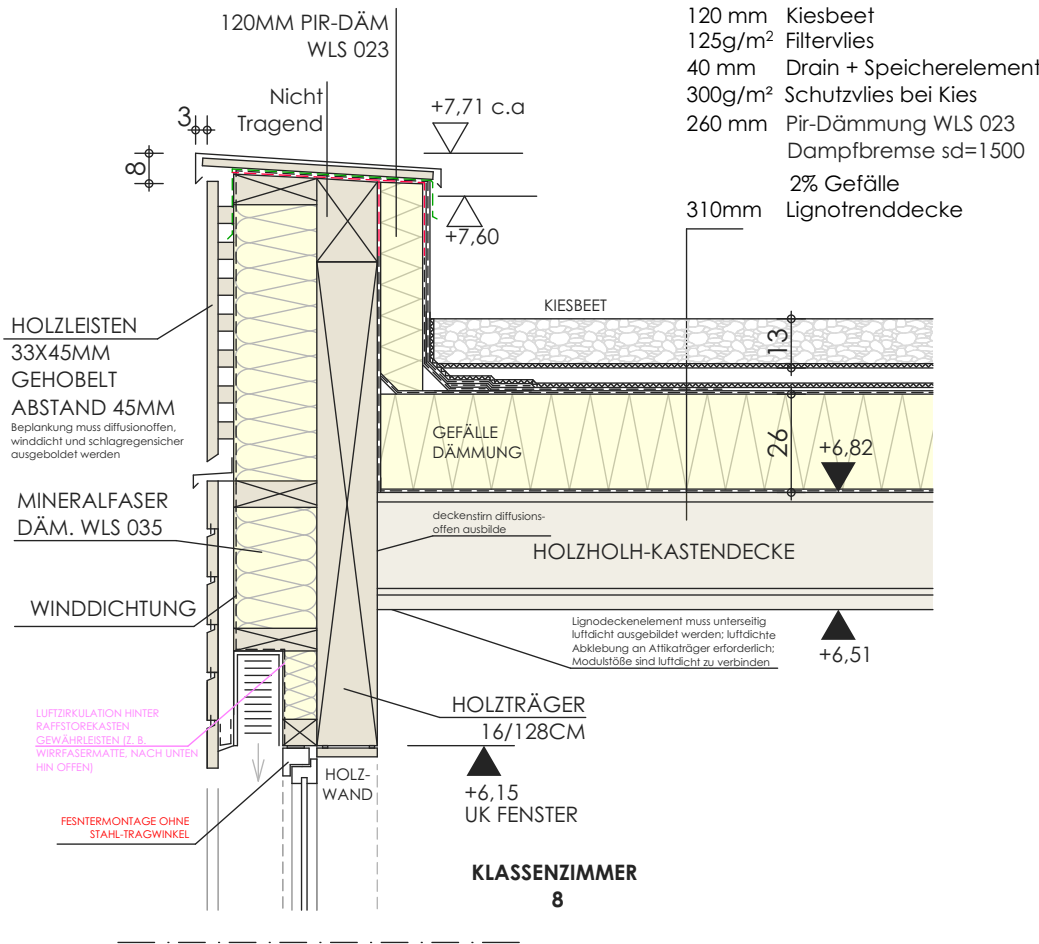
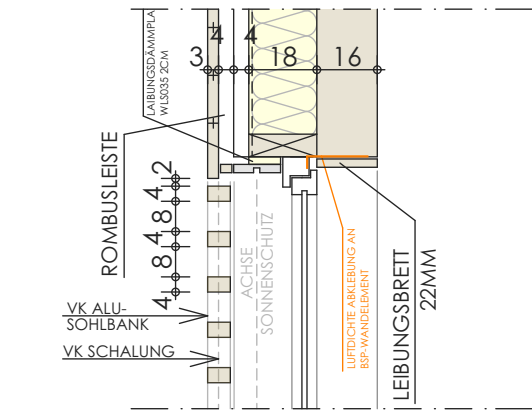


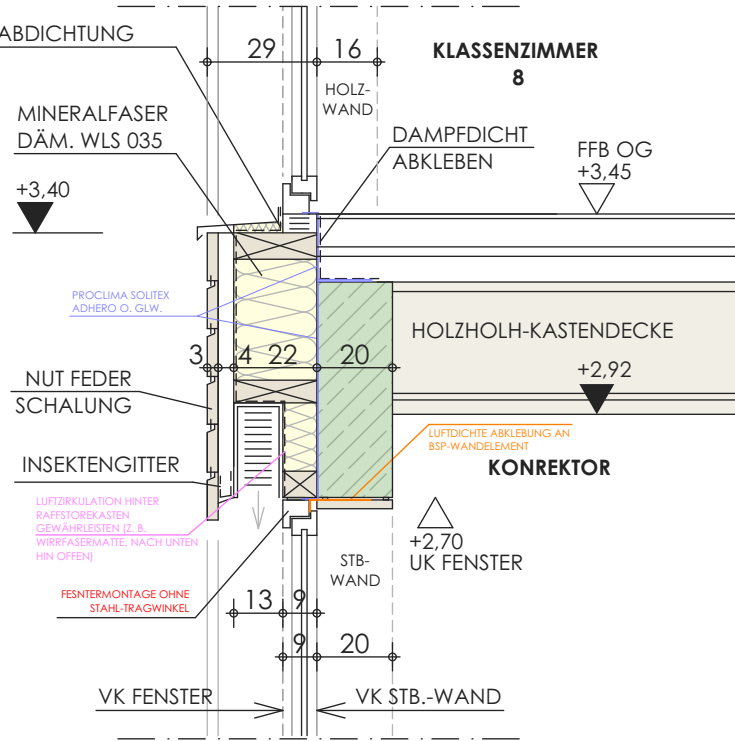
Vertikaler Schnitt
OG-Attika
1:20



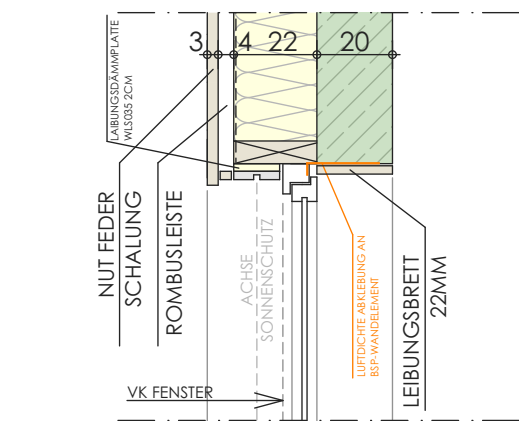
Horizontaler Schnitt
Schnitt OG
1:20



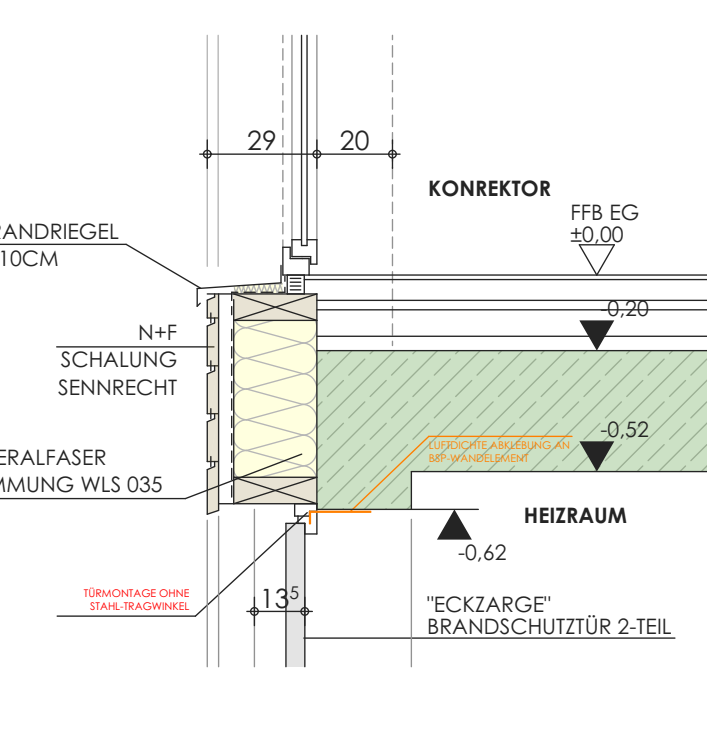
Vertikaler Schnitt
EG-OG
1:20



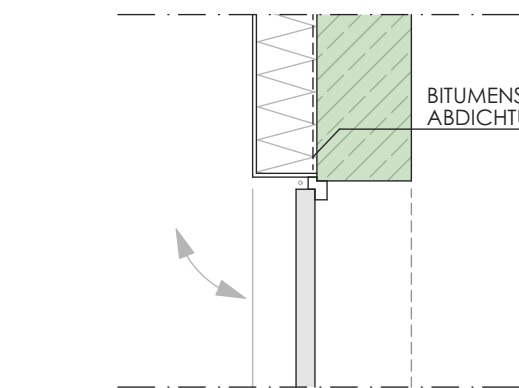
Horizontaler Schnitt
+0,50
1:20



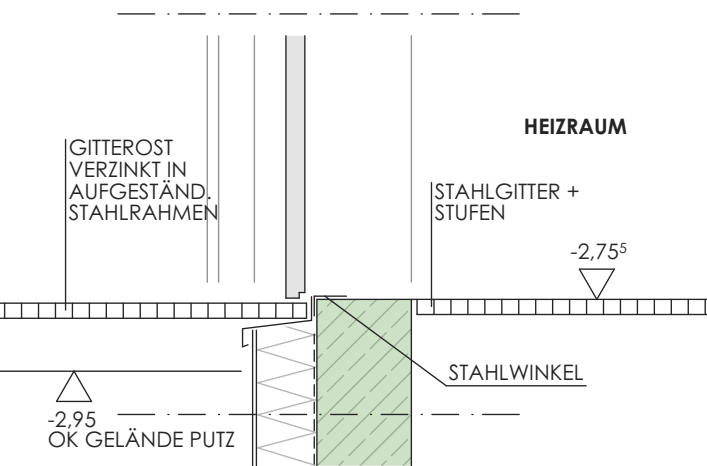
Vertikaler Schnitt
EG-UG
1:20



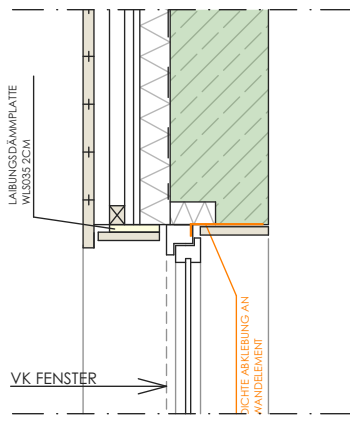
Horizontaler Schnitt
UG
1:20



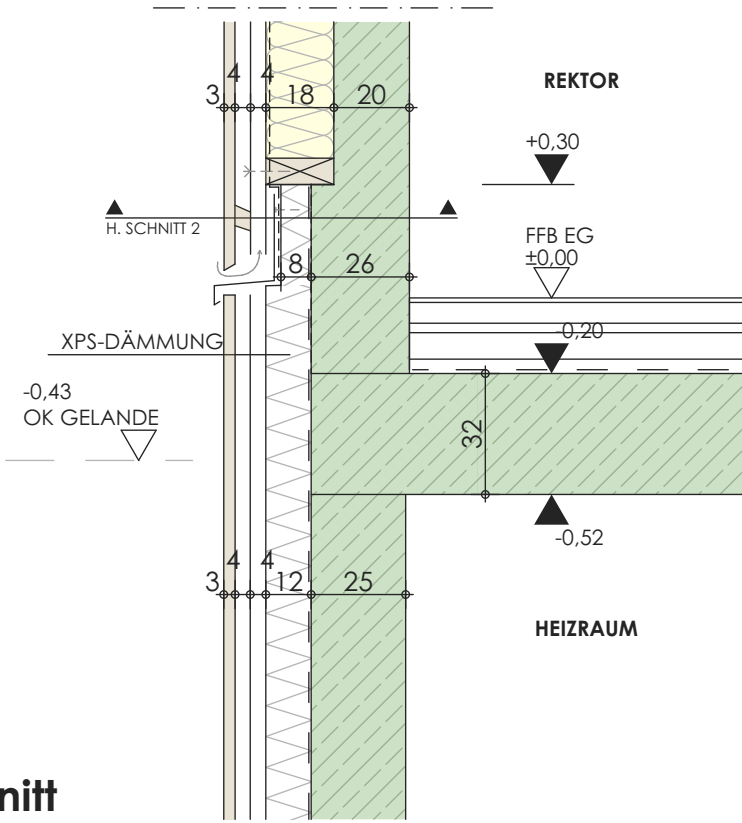
Vertikaler Schnitt
UG
1:20



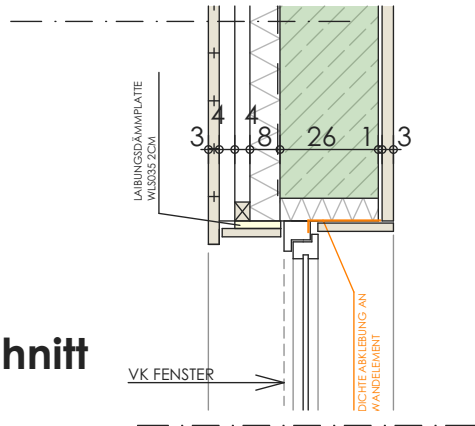
Stb.-wand
Horizontaler Schnitt
+0,10
1:20



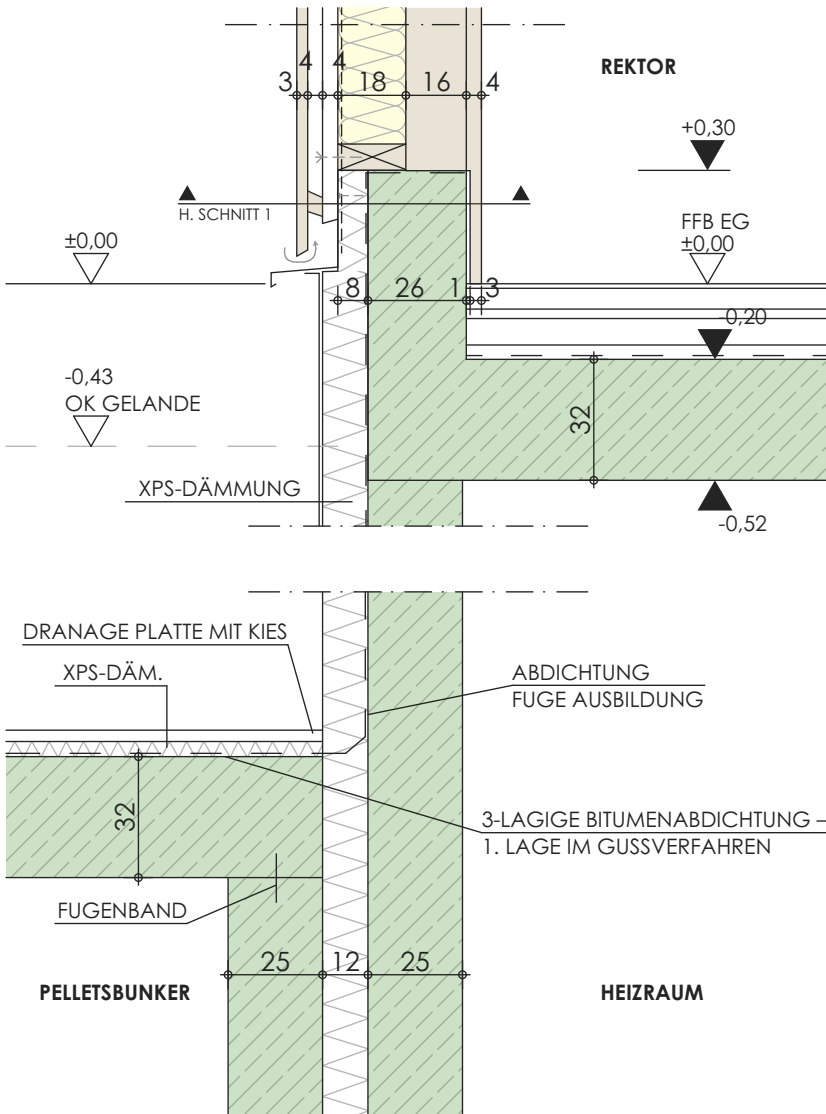
Stb.-wand
Vertikaler Schnitt
EG-UG
1:20



Holz wand
Horizontaler Schnitt
+0,10
1:20



Holz wand
Vertikaler Schnitt
EG-UG
1:20



| | | | | | |
|---|------------------|-------------------|------|--------|---------|
| PROJEKT/NR.: ERWEITERUNG DER GRUNDSCHULE IN BRUNNTHAL | | ESB / 24.476 | | | |
| PLANUNGSSTUFE : DETAILPLANUNG | | | | | |
| PLANINHALT: BT2 - Vertikal + Horizontal Schnitte 2/2 | | | | | |
| LV-POS | | STK | | | |
| BTL | | MABSTAB | 1:20 | | |
| GEZ. IL | DATUM 2026.06.03 | PL. ESB_AP_05.pln | | PL.NR. | 1 0 6 3 |